

## INRF Facility InSite SOP

What is INRF Facility InSite?

The INRF Facility InSite page in the Forged Systems allows the data of room conditions to be accessed and tracked. In each room of the INRF, the data of the following room conditions are available and can be plotted with a desired time range:

1. Room Temperature ( in degrees Fahrenheit)
2. % Relative Humidity
3. Occupancy (# of occupants in the room)

How to use INRF Facility InSite?

Access the webpage directly by visiting this link:


<https://inrf.forged.systems/home/facility/inrf/insite/>

At the top of this page you will see



The screenshot shows the top portion of the INRF Facility InSite webpage. At the top, there is a browser address bar with the URL <https://inrf.forged.systems/home/facility/inrf/insite/>. Below the address bar are the logos for Calit2 and CalPlug. To the right of the logos are navigation links: Home, INRF, Equipment, Login, and Register. The main heading of the page is "INRF Facility InSite" with a breadcrumb trail "Home / INRF InSite". Below the heading is a search area titled "Select Location and Date Range". This area contains a dropdown menu with "RM2332 Lithography" selected, a date range selector showing "01/16/2017" to "01/23/2017", and a blue "Get" button with a magnifying glass icon.

Select the desired location from the drop down menu, and then select the desired date range of

interest. Then click the  button and below the data will populate and be displayed.

An example is shown below:

Select Location and Date Range

RM2335 Thin Film RIE Processing

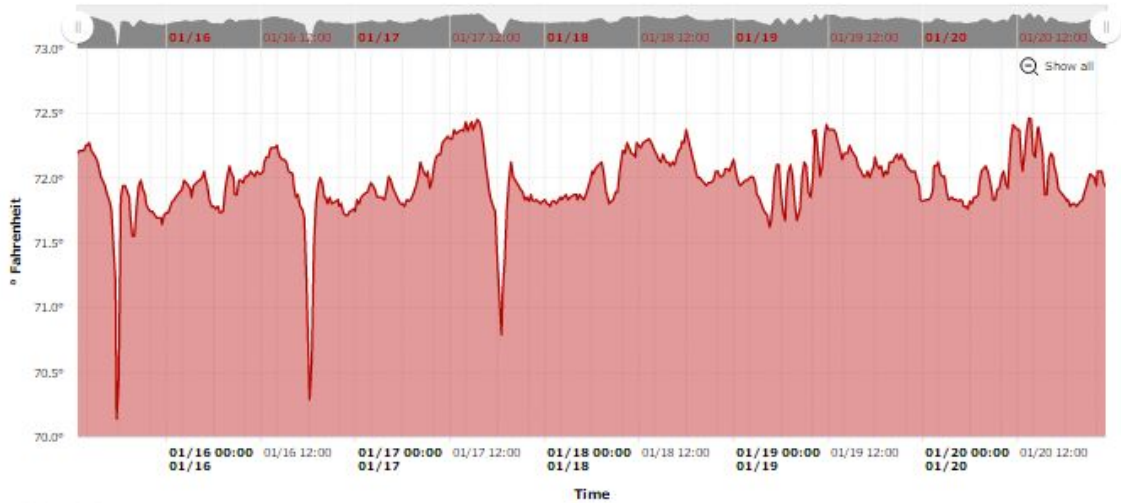
01/10/2017

to

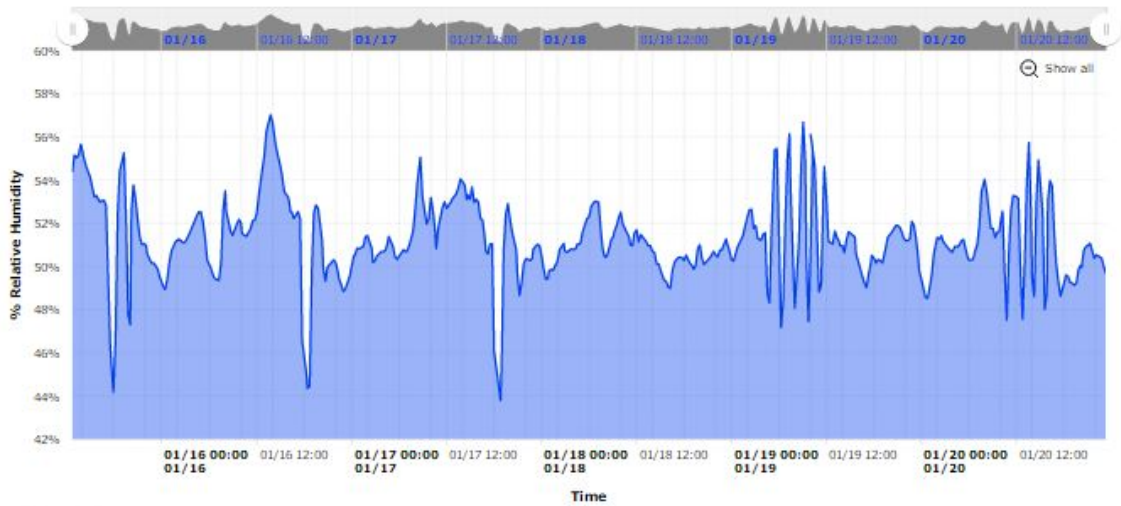
01/20/2017

Get

Environment Graphs



Select Pan




Select Pan



\* The Select and Pan features are currently non-functional

Select Pan



Note, one can also zero in on a specific date and time range by using the symbol: . Drag one of these circles with the hash marks to the start date and time you are interested in focussing in on, and drag the other to the end date and time you are interested in on.

Notice below that Feb 7th 2017-Feb 10th 2017 has been zeroed in on on the Temperature Graph below:

Environment Graphs

